

Innovative
Software to
Accelerate Your
Business



JES2Mail and JES2FTP

z/OS Output Transformation
and Delivery

www.tonesoft.com/jes2mail

JES2Mail and JES2FTP Suite

- JES2Mail for Email Delivery
- JES2FTP for Server Delivery and RSS Feed
- RPL (Report Processing Language)
 - Script language for intelligent report processing
- PDF Overlays
 - Create sophisticated, rich PDF output

JES2Mail and JES2FTP Overview

z/OS Software to Post-Process and Deliver Mainframe Output and Reports

- Operates After Mainframe Report / Print / Output File is Created
- Transform and Enhance the Report / Output:
 - Convert to PDF, HTML, and other formats
 - Creates enhanced, 'camera-ready' PDF output
 - Split and bundle/unbundle report
 - Extract data for spreadsheet or other processing
 - Encrypt and password-protect content
- Deliver Results Via:
 - Email
 - FTP server for Web Access
 - Mainframe (HFS or back into JES)

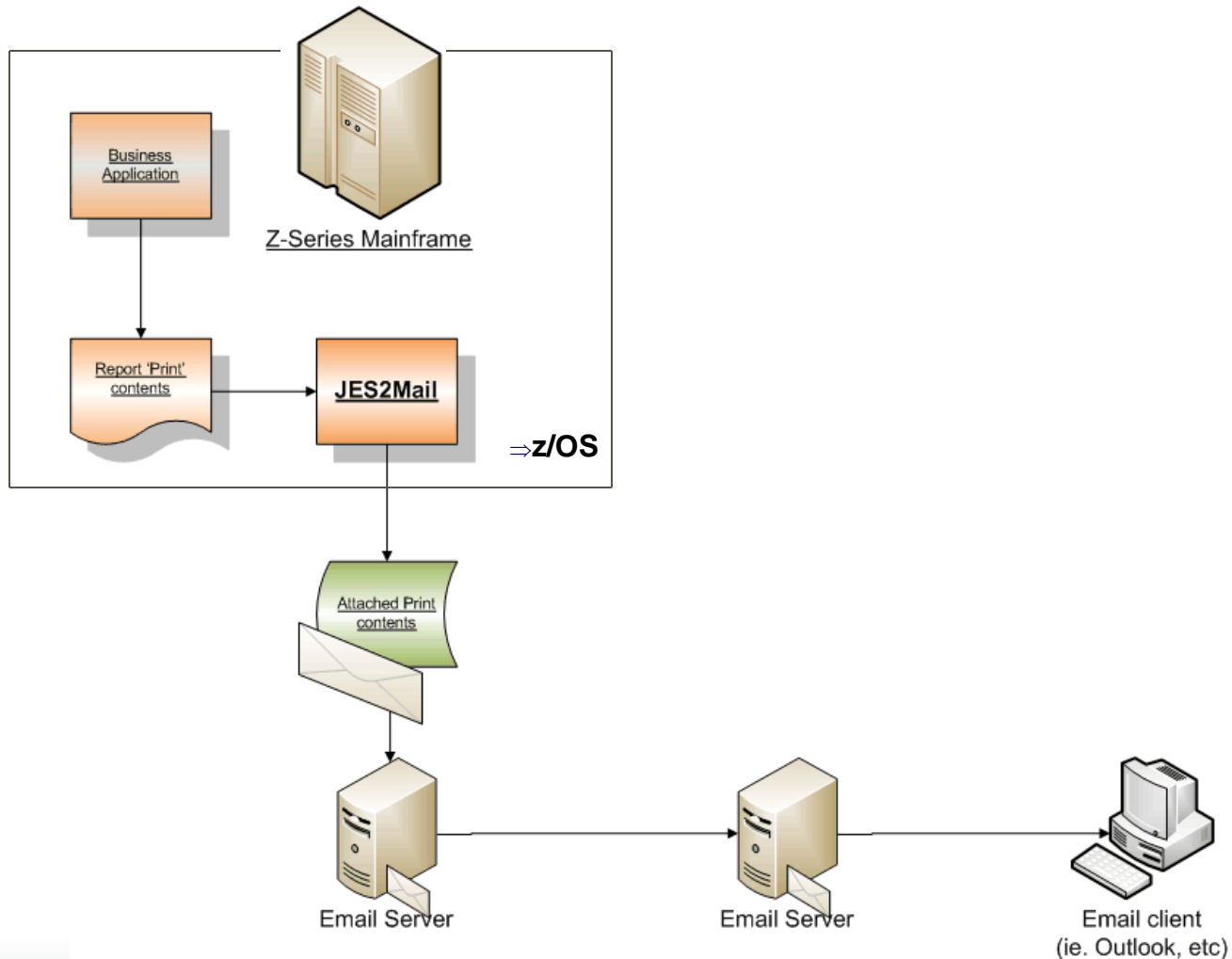
Benefits of JES2Mail and JES2FTP

- Save Money
 - Reduce paper/report distribution costs
 - Automate multi-step processes
- More Timely, Useful Reports
 - 'Push' or 'Pull' info as it becomes available
 - PDF is platform independent, 'de facto' standard for viewing/printing
 - Graphic enhancements, bar codes, embedded data
- More Secure Reports
 - AES encryption and password protection
- Incremental / Tactical Deployment
 - One report / application at a time

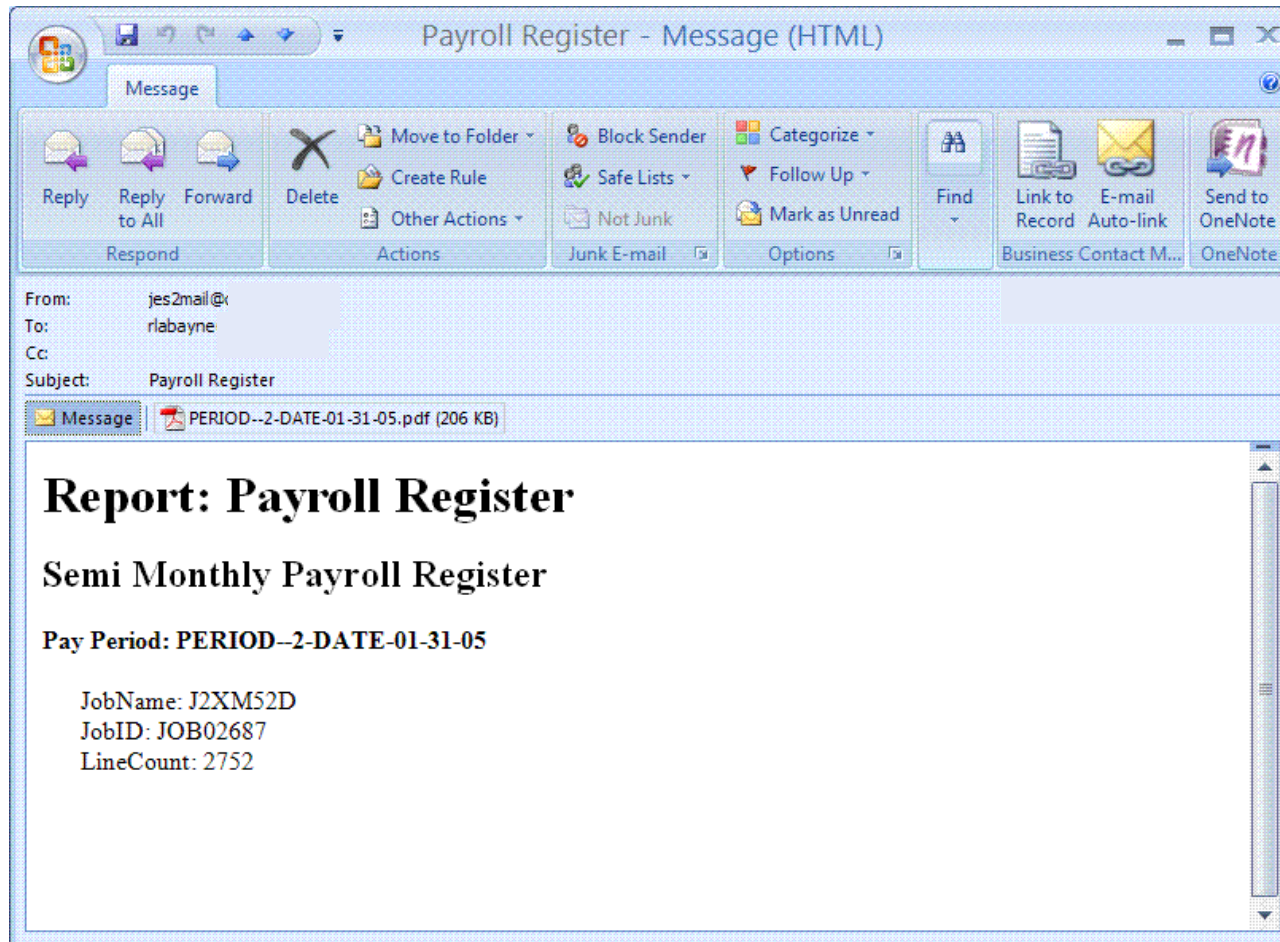
How JES2Mail and JES2FTP Work

- Takes Reports / Output from the Mainframe
 - From JES2/JES3 spooled output (SYSOUT) or sequential files (including HFS)
- Converts them to a Variety of Formats
 - PDF, Text, RTF, HTML and more
 - ZIP compression
- Deliver via Email and/or FTP / Secure FTP
 - Built-in SMTP sender
 - FTP to off-host servers
 - Host files (including HFS), or 'back into JES' (for subsequent processing)
- PDF Creation
 - 'Web-enables' print contents
 - Ubiquitous PDF archival report creation
 - Portable, non-platform specific output

JES2Mail Flowchart



Recipients Receive Email from JES2Mail



Basic PDF Report

Adobe Acrobat Professional - [Rep019 - Payroll Register - Plain.PDF]

File Edit View Document Tools Advanced Plug-Ins Window Help

Open Save Print Email Search Select Text 92%

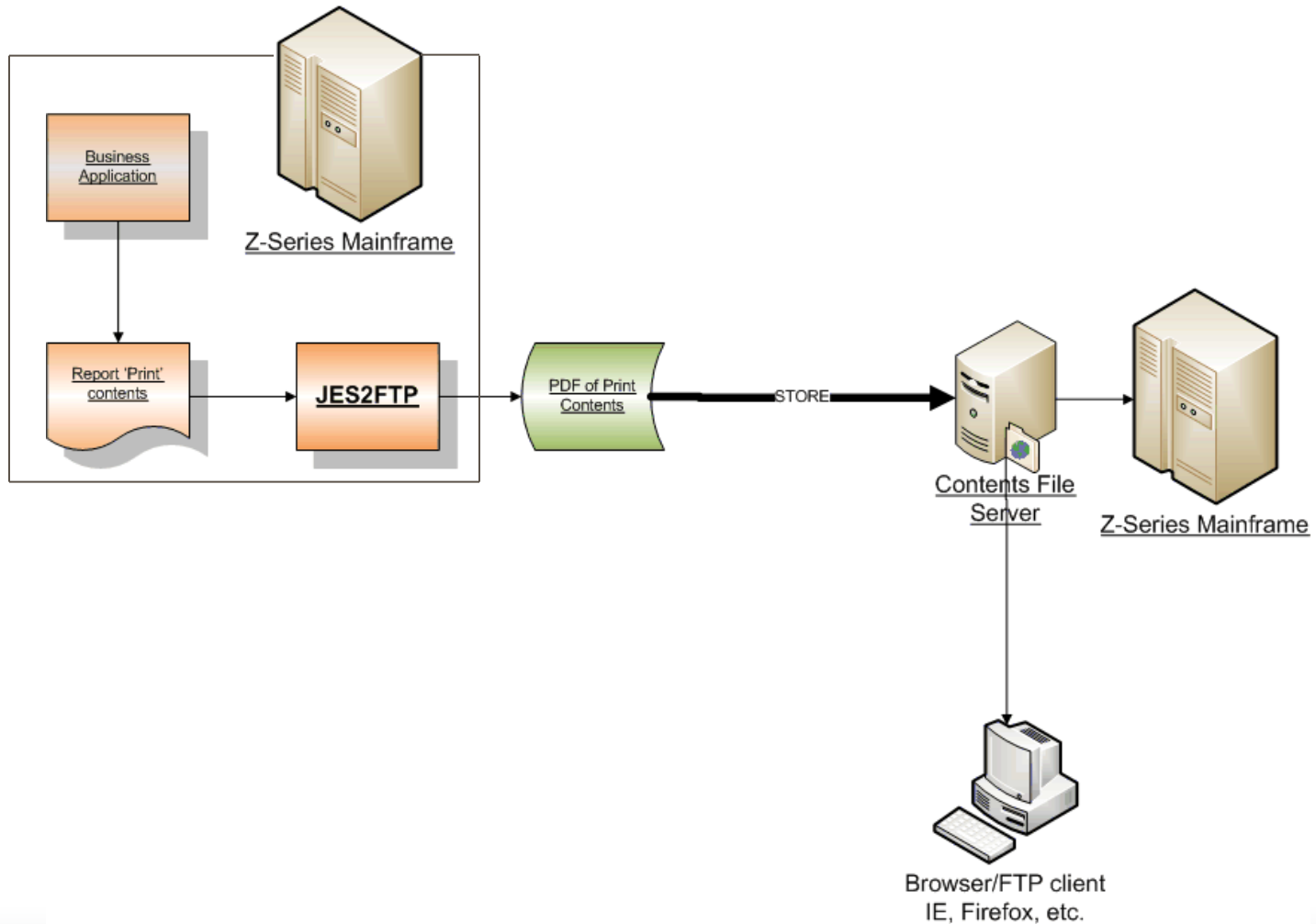
Bookmarks
Signatures
Layers
Pages
Comments

RUN DATE 02/07/05 TAX ENTITY 00001 CORPORATE HEADQUARTERS PAGE 1
 RUN TIME 12:34 PAY ENTITY SEMI1 SEMI MONTHLY PAY ENTITY PROGRAM PMDCPREG
 PERIOD 2 DATE 01/31/05 REPORT ID. 019 PAYROLL REGISTER

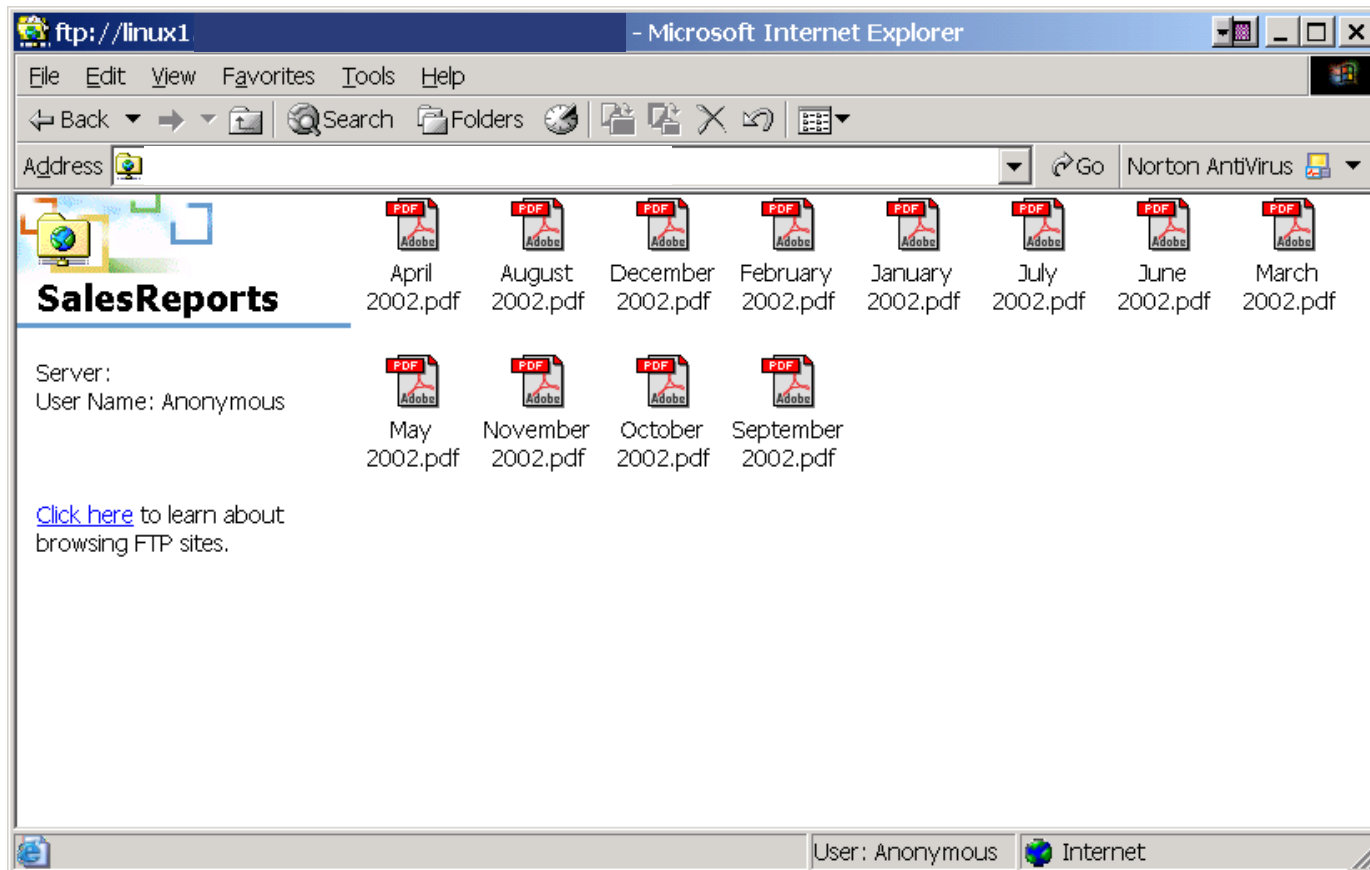
EARNINGS				TAXES				DEDUCTIONS										
KT	CD	SO	HOURS	CURR AMOUNT	YTD AMOUNT	TAXNO	MRO DEP	CURR BASE	CURR AMOUNT	YTD AMOUNT	CDE	OD	CURR AMOUNT	YTD AMOUNT				
EMPL:	025574001			ADAMS, MARGARET		FR/YR:	02/05 D/T:	020705/12214400	DEPT:		ST:	A	A/P:	Y	DUP:	B	INT CK:	0503800000001
R	001	M	86.67	2,872.91	5,745.82	\$S00M		2,872.91	41.65				83.31					
						\$S001		2,872.91	178.12				356.24					
						\$S002 S	0	2,872.91	656.52				1,313.04					
						CA SR	0	2,872.91	178.73				357.46					
CHECK TOTALS: HOURS				86.67	EARNINGS	2,872.91	TAXES	1,055.02	DEDUCTIONS		NET PAY			1,817.89	CHK#			
EMPL:	666030002			ALDRICH, AUDREY I		FR/YR:	02/05 D/T:	020705/12214400	DEPT:		ST:	A	A/P:	Y	DUP:	B	INT CK:	0503800000002
R	001	M	86.67	1,000.00	2,000.00	\$S00M		1,000.00	14.50				29.00					
	700	BA		70.00-	140.00-	\$S001		1,000.00	62.00				124.00					
	701	A		10.00-	20.00-	\$S002 S	0	1,000.00	133.44				266.88					
						HY006 SN	0	1,000.00	1.30				2.60					
CHECK TOTALS: HOURS				86.67	EARNINGS	1,000.00	TAXES	211.24	DEDUCTIONS		NET PAY			708.76	CHK#			
					EMPLOYER NON-GROSS	80.00-	TAXES											
EMPL:	930040060			BILLINGSTON, MICHAEL JAMES		FR/YR:	02/05 D/T:	020705/12214400	DEPT:		ST:	A	A/P:	Y	DUP:	B	INT CK:	0503800000003
R	INC	BA	80.00	20.00	40.00	\$S00M		1,645.00	23.86				47.71					
	001	M	80.00	1,625.00	3,250.00	\$S001		1,645.00	101.99				203.98					
						\$S002 S	0	1,645.00	298.33				596.66					
						OH MR	2	1,645.00	56.89				113.78					
						OHAK MR	2	1,645.00	16.45				32.90					
CHECK TOTALS: HOURS				80.00	EARNINGS	1,645.00	TAXES	497.52	DEDUCTIONS		NET PAY			1,147.48	CHK#			
EMPL:	666030003			BINGHAM, KATHY I		FR/YR:	02/05 D/T:	020705/12214400	DEPT:		ST:	A	A/P:	Y	DUP:	B	INT CK:	0503800000004
R	001	M	86.67	1,000.00	2,000.00	\$S00M		1,000.00	14.50				29.00					
	700	BA		70.00-	140.00-	\$S001		1,000.00	62.00				124.00					
	701	A		10.00-	20.00-	\$S002 S	0	1,000.00	133.44				266.88					
CHECK TOTALS: HOURS				86.67	EARNINGS	1,000.00	TAXES	209.94	DEDUCTIONS		NET PAY			710.06	CHK#			
					EMPLOYER NON-GROSS	80.00-	TAXES											
EMPL:	120620041			CAPLAN, STEVEN		FR/YR:	02/05 D/T:	020705/12214400	DEPT:		ST:	A	A/P:	Y	DUP:	B	INT CK:	0503800000005
R	001	M	86.67	2,749.16	8,247.48	\$S00M		2,749.16	39.86				113.59					
						\$S001		2,749.16	170.44				511.34					
						\$S002 S	0	2,749.16	618.16				1,854.48					
						PA SR	0	2,749.16	76.98				230.94					
						PANNR SR	0	2,749.16	52.00				52.00					
CHECK TOTALS: HOURS				86.67	EARNINGS	2,749.16	TAXES	905.44	DEDUCTIONS		NET PAY			1,843.72	CHK#			
EMPL:	940010030			CROWLEY, JOANNE		FR/YR:	02/05 D/T:	020705/12214400	DEPT:		ST:	A	A/P:	Y	DUP:	B	INT CK:	0503800000006
R	EC2	BA	12.50		25.00	\$S00M		3,253.75	47.18				94.36	LIF			9.85	19.70
	FSA	BA	2.50-		5.00-	\$S001		3,253.75	201.74				403.47	SUP			9.85	19.70

11 x 8.5 in 1 of 99

JES2FTP Flowchart



JES2FTP for Report Repositories

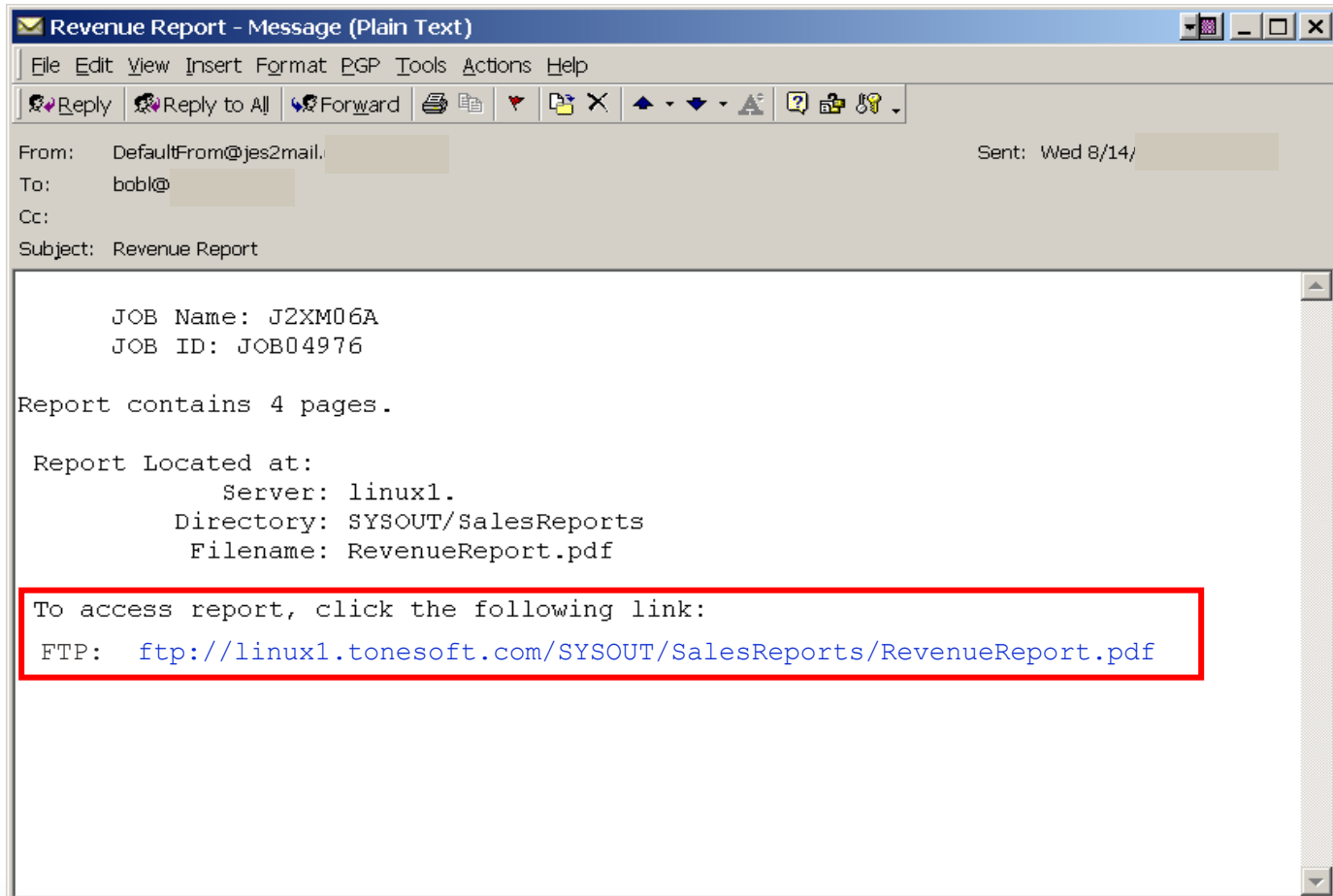


Simple PDF Report (Greenbar)

13:30:51		COMMA SALES				
PAGE: 1		DIVISION: NORTH				
COMPANY NAME	PRODUCT-A	PRODUCT-B	PRODUCT-C	PRODUCT-D	PRODUCT-E	
INTERSTATE STOCKYARDS	18506	36281	58649	43323	28934	
WYTG BROADCASTING INC	60506	33567	67208	61974	51073	
HOMESTEAD ESTATES	70635	78414	97709	18095	76115	
WYTG BROADCASTING INC	55643		45303	13101	64485	
HEALTHY VINEGARS INC	65653	11628	97501	1230	15284	
SAFARI IMPORTS LTD	3511	69622	35148	98108	11670	
PURE GROWTH DOG FOOD INC	39184	45237		99552	30208	
RENTAL PROPERTIES INC	59019	68285	37694	56656	93957	
WYTG BROADCASTING INC	64321	89151	21679	67779	3791	
INTERSTATE STOCKYARDS	57264	15003	52298	47045	31461	
ACME SLEDGE HAMMERS INC	92525	42772	83157	94111	36132	
SAFARI IMPORTS LTD	18898	30203	35452	72239	45598	
YOUNG & BROWN INC	33244	90470	64843	35210	26720	
RENTAL PROPERTIES INC	23882	50187	62245	33716	85267	
INTERSTATE STOCKYARDS	96582	13077	70328	2304	1484	
INTERSTATE STOCKYARDS	93745	69167	34615	18960	32860	
SAFARI IMPORTS LTD	70524	25797	62445	22673	920	
INTERSTATE STOCKYARDS	22213	50639	37718	33690	14865	
HOMESTEAD ESTATES	96282	71345	55528	98269	67765	
HOMESTEAD ESTATES	38003	47853	87514	78543	54344	
UNLIMITED ADVENTURES INC	1515	29823	18977	50113	56345	
YOUNG & BROWN INC	99741	89635	85882	74984	7540	
HOMESTEAD ESTATES	69375	75253	48487	10204	71001	
YOUNG & BROWN INC	4382	75220	52399	5018	42482	
WYTG BROADCASTING INC	77536	7479	51351	81525	38767	
SAFARI IMPORTS LTD	17875	20708	16962	79297	92021	
HEALTHY VINEGARS INC	21496	71971	6764	22586	40741	
HOMESTEAD ESTATES	65200	47270	10044	71004	13516	

JES2FTP with Email Notification

- Includes a Link to the Report



JES2Mail / JES2FTP Operation

- Runs as a Batch Job
 - Batch Step
- Runs as JESWriter Started Task
 - Uses SAPI for JES access
 - Works with JES2 or JES3
 - Handles both reports and “SMTP like” data streams
- JES2Mail can run in ‘Simple Message’ Mode
- z/OS Requirements (OE, TCP/IP, LE, etc.)
- Can Send Back to JES for Further Processing
- Does Not Require SMTP Server on the z/OS Host

JES2Mail and JES2FTP

Advanced Tools:

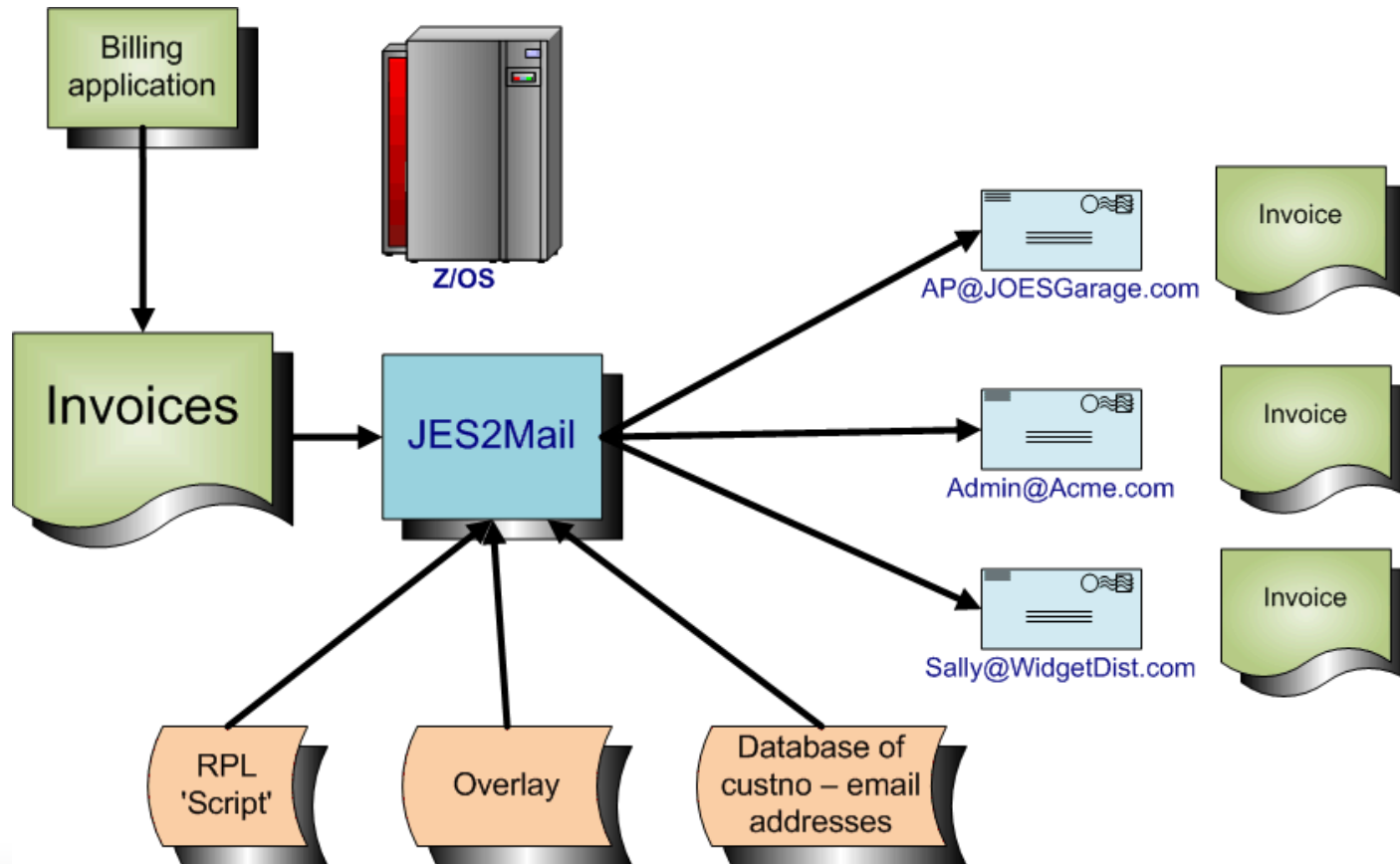
- Report Processing Language (RPL)
- PDF Overlays

Report Processing Language (RPL)

- Easy-to-use scripting optimized for report and page processing
- Control splitting of report into sub-reports
- Extract data for addressing
- Perform table lookup for an email address
- Define email cover page (JES2Mail)
- Define notify message (JES2FTP)
- Extract data for Comma Delimited (.csv) file
- Build PDF outline indexes
- Dynamically apply Overlay, Fonts, etc. for a page
- And more . . .

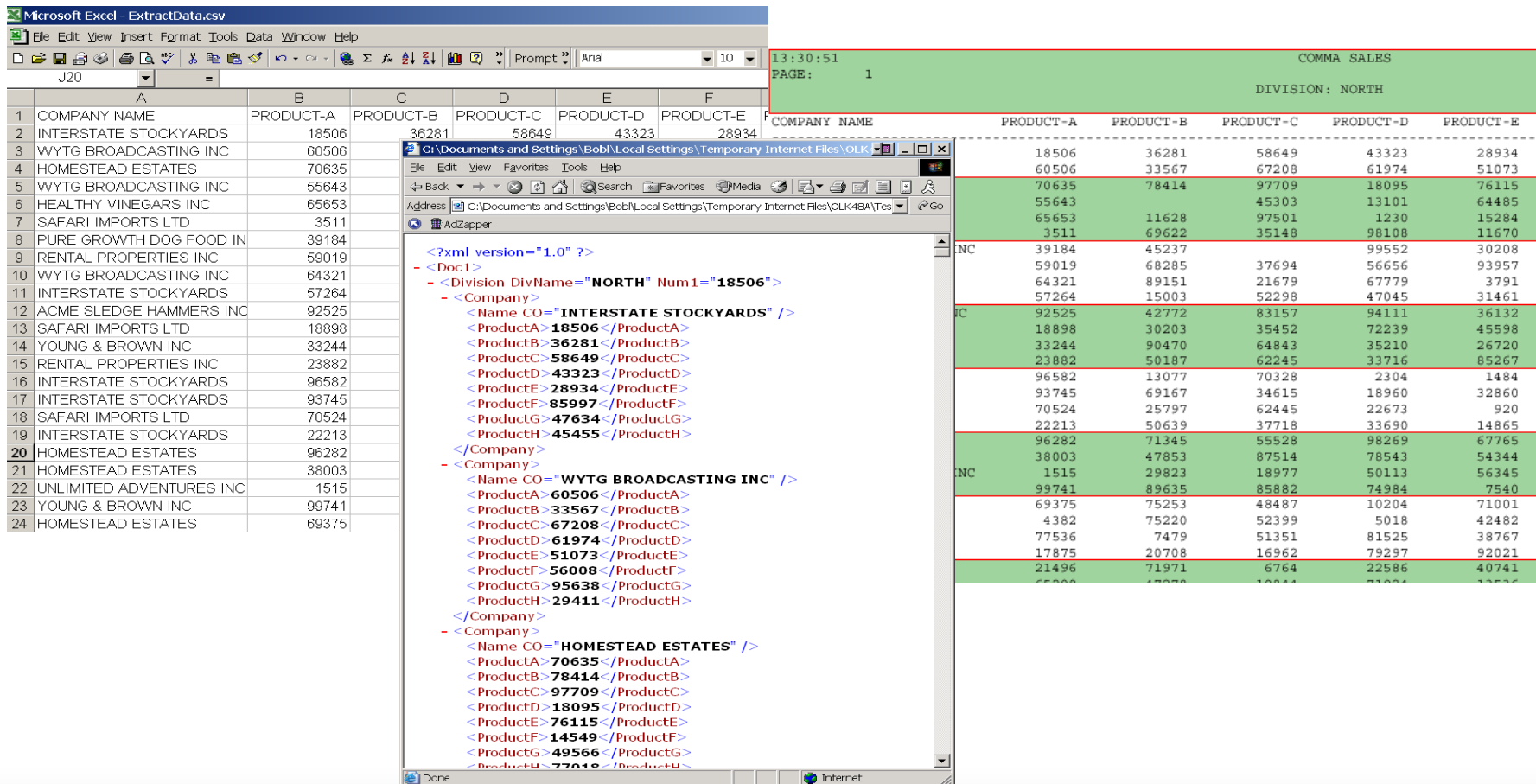
RPL Example

- Split Report into Multiple Segments and Use Table Lookup to Determine Individual Recipients



RPL Example

- Create Spreadsheet and XML Files Automatically



The screenshot illustrates the process of generating XML from a spreadsheet. On the left, a Microsoft Excel window titled 'ExtractData.csv' shows a table with columns for company names and products (A through H). On the right, an Internet Explorer window displays the resulting XML output, which is structured to include the data from the spreadsheet. The XML is organized into a 'COMMA SALES' document with a 'DIVISION: NORTH' section. Each company's data is represented as a 'Company' element containing a 'Name' and eight 'Product' elements, each with a numerical value.

COMPANY NAME	PRODUCT-A	PRODUCT-B	PRODUCT-C	PRODUCT-D	PRODUCT-E
INTERSTATE STOCKYARDS	18506	36281	58649	43323	28934
WYTG BROADCASTING INC	60506				
HOMESTEAD ESTATES	70635				
WYTG BROADCASTING INC	55643				
HEALTHY VINEGARS INC	65653				
SAFARI IMPORTS LTD	3511				
PURE GROWTH DOG FOOD IN	39184				
RENTAL PROPERTIES INC	59019				
WYTG BROADCASTING INC	64321				
INTERSTATE STOCKYARDS	57264				
ACME SLEDGE HAMMERS INC	92525				
SAFARI IMPORTS LTD	18898				
YOUNG & BROWN INC	33244				
RENTAL PROPERTIES INC	23882				
INTERSTATE STOCKYARDS	96582				
INTERSTATE STOCKYARDS	93745				
SAFARI IMPORTS LTD	70524				
INTERSTATE STOCKYARDS	22213				
HOMESTEAD ESTATES	96282				
HOMESTEAD ESTATES	38003				
UNLIMITED ADVENTURES INC	1515				
YOUNG & BROWN INC	99741				
HOMESTEAD ESTATES	69375				

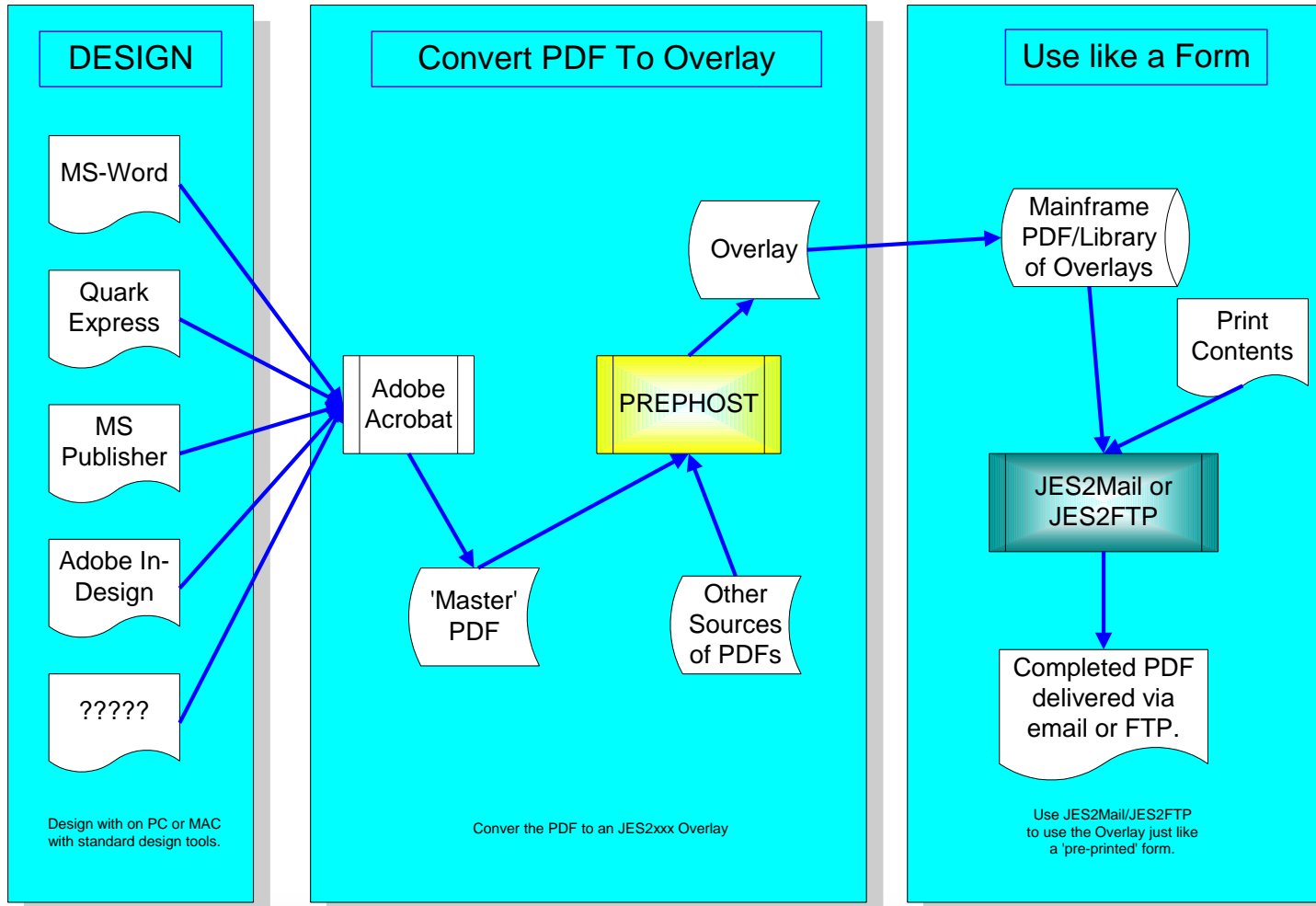
PDF Overlays (Graphic Enhancement)

- Create Final-form PDF Output
 - Add logos, graphics, images and watermarks
 - Embed links, navigational indices, and more

- Replace Pre-printed Forms with Overlays
 - Apply report content to an Overlay

- Turn any 'Blank' PDF into a JES2Mail / JES2FTP Overlay

Making an Overlay



Getting Started

- Easy to Install
 - Request a [no-cost evaluation](#) from Tone Software
 - A couple of hours to install and make operational
- Easy to Implement
 - Identify a report to transform and deliver
 - No changes to existing programs required - use your existing reports 'as is'
- Easy to Roll Out
 - Email and Adobe Reader are all users need to view your z/OS Mainframe output and reports