

ReliaTel[®]

New Features and Enhancements

Release 6.1.0



New Features and Enhancements - Release 6.1.0

New features and enhancements for release 6.1.0.

New Features

- Flow data added to the Visual 360 module
- Device Discovery View using Visual 360
- Cisco call paths displayed in Visual 360 using Netflow data
- Sending alarm data to external applications
- Cisco IOS support
- Displaying modules in detached browser windows

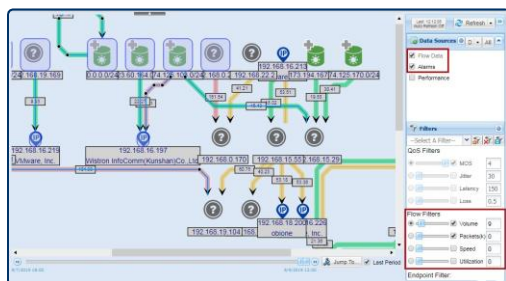
Enhancements

- Syslog data collection
- Enhanced logging capabilities for the rclog entity
- Error notification - ReliaTel has lost its connection to the database

New Features

Flow Data Added to the Visual 360 Module

This release adds flow data to the Visual 360 module. Previous releases addressing flow data have included custom tonelets to graph flow data in your network and flow-specific reports. With this release flow data is now incorporated into the Visual 360 module.

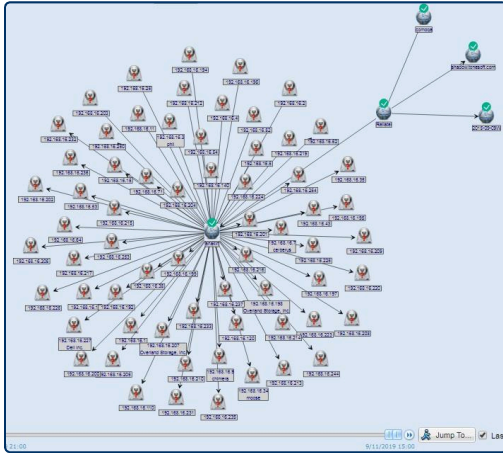


Using the module's visual cues, such as color-coding to denote alarm thresholds and performance, you will be able to assess, in real time, your network's health and performance levels.

All the functionality of the Visual 360 module is available for flow data, such as filtering on flow metrics (volume, packets, speed, and utilization), setting metric thresholds, auto-refresh, and drill-down capabilities.

Device Discovery View Using Visual 360

Use this feature to inventory the managed and unmanaged devices on your network, that are 'visible' to a DAP (data acquisition point).



Device inventory uses the Visual 360 module to present discovered devices. Managed devices are displayed using the module's identifying icons as to the type of device (switch, router, and so forth), alarm badges, and performance data using the module's color coding (red, yellow, and green) to denote alarm levels and performance thresholds.

Unmanaged devices will display IP addresses but no performance data since they are not managed (monitored) by ReliaTel. Unmanaged devices, however, may display RDNS (reverse domain name system) and/or OUI (organizational unique identifier) information if enabled on the DAP.

Device discovery is an optional feature enabled or disabled on each DAP. Enabling or disabling is an administrative task performed in the DAP Services tab.

An added benefit of this feature is the convenience of converting unmanaged devices to ReliaTel entities directly from this interface. If the discovery inventory reveals unmanaged devices that you want to convert to ReliaTel entities you can complete the conversion in the Visual 360 interface by selecting the 'Create Entity' option for the device, then completing the set up in the Quick Admin pop-up.



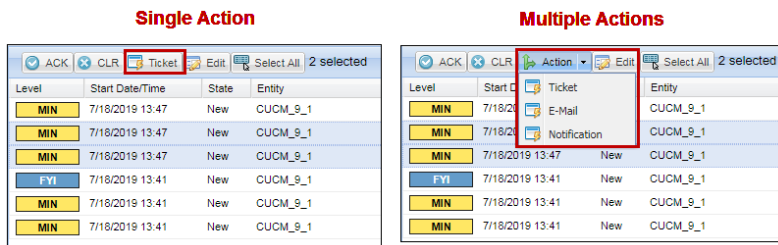
Cisco Call Paths Displayed in Visual 360 Using Netflow Data

This release adds call paths to Cisco Call Manager calls by marrying flow data with call data. This is done by matching the origination and destination IP addresses of a call with flow data having the same IP addresses within the same time frame. With that match, flow data can display the origination, next hop(s), and destination IP addresses of the call (in both directions).

Sending Alarm Data to External Applications

This feature enhances the usability of the Alarm List. It enables you to create an action that sends alarm data to an application external to ReliaTel. External applications receiving alarm data might include a ticketing system, a network monitoring system, a reporting program, e-mails, and so forth. Actions are user-defined; ReliaTel is not pre-populated with a list of actions from which to select. To create an action scripting is required; Tone Professional Services can assist you in creating scripts.

ReliaTel gives you the flexibility to create either a single action or multiple actions. Selecting an action from the menu invokes the purpose for which it was created.

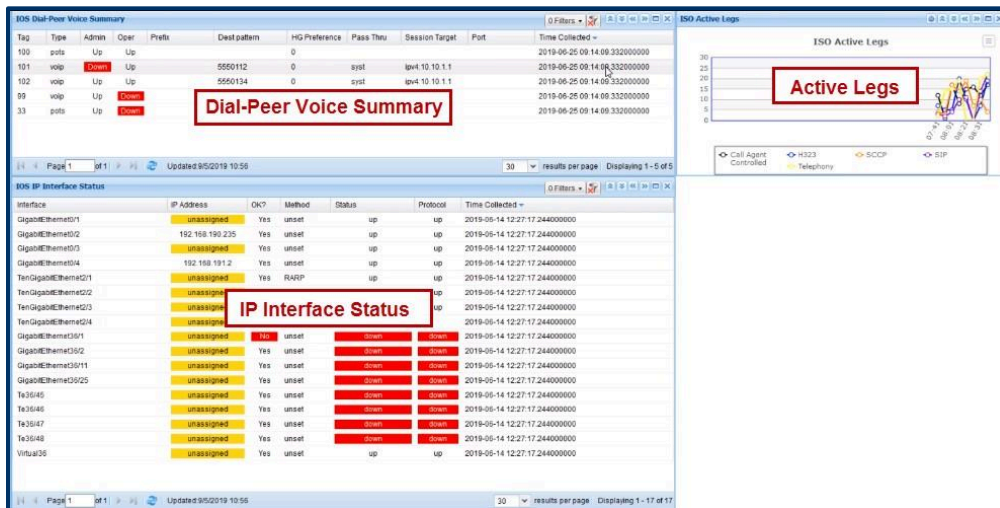


Cisco IOS Support

ReliaTel expands its support for Cisco devices and operating systems by adding support for Cisco IOS (Internetworking Operating System).

Support includes:

- 1) A new class for creating entities that will monitor devices running Cisco IOS and
- 2) Three new Dashboard tonelets to graph data collected from Cisco IOS devices:
 - Dial-Peer Voice Summary
 - IP Interface Status
 - Active Legs



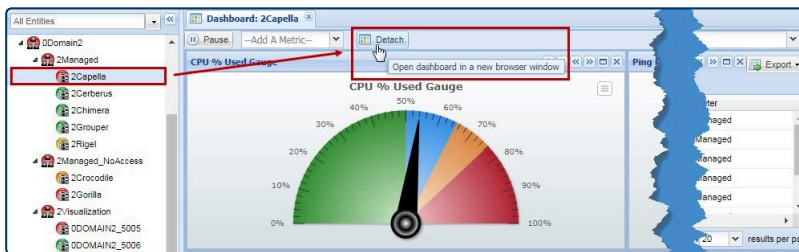
Displaying Modules in Detached Browser Windows

This feature gives you additional ways to view data in the Dashboards, Voice Quality, and Performance Reporting modules.

With this feature you'll be able to:

- View data from these modules in browser windows that are 'detached' from the ReliaTel product interface.
- In a multi-screen environment, be able to view data selected from a module in a browser window while, at the same time, viewing the full network in the ReliaTel product interface.
- Open a browser window without opening the full ReliaTel product.
- Share browser windows via e-mail or other distribution channels.
- Embed the Voice Quality scatter plot graph in third-party applications.

Viewing Data in a Detached Browser Window



ReliaTel provides new tools to enable you to display data from each of these modules in detached browser windows. This feature enables you to maintain a consistent view of the entity, collector, or report selected for the window while giving you the flexibility to monitor alarms and navigate to other areas of the network at the same time.

The detached window is visually independent of the product interface, but remains operationally connected. This means that even though you are viewing an entity, collector, or report in the detached window, active monitoring continues. Data is updated in near-real time when the window is refreshed or a report is updated.

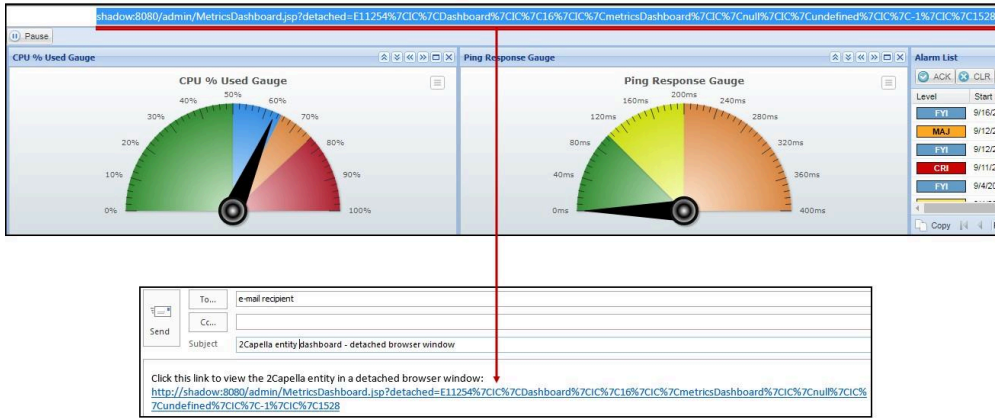
Simultaneous Viewing in a Multi-Screen Environment

In a multi-screen environment you can simultaneously view the detached browser window and ReliaTel's full product interface at the same time. This gives you continuous visibility into a troublesome network issue in near-real time while monitoring other areas of the network in the product interface.

Creating a Unique URL

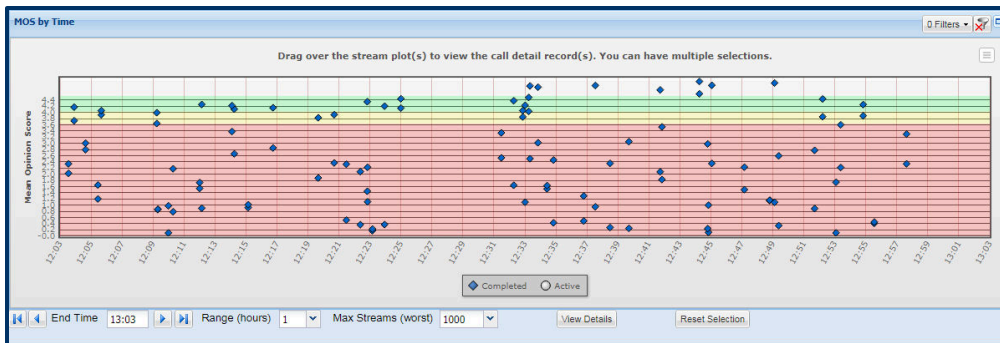
Creating a unique URL enables you to: 1) Share the detached browser window with other users by sending the URL as a hyperlink via e-mail or other distribution channels and; 2) Use copy/paste to retain the URL in a third-party application such as Notepad then paste it into the address line of a browser to

re-open the window. In either scenario, when the window opens ReliaTel is able to present data reflecting the current status of the entity, collector, or report.



Embedding the Voice Quality Scatter Plot in a Third-Party Application

In previous releases ReliaTel provided tools that make it possible to embed Dashboard selections and Performance Reporting reports in third-party applications. With this release you can embed Voice Quality scatter plot views into third-party applications as well.

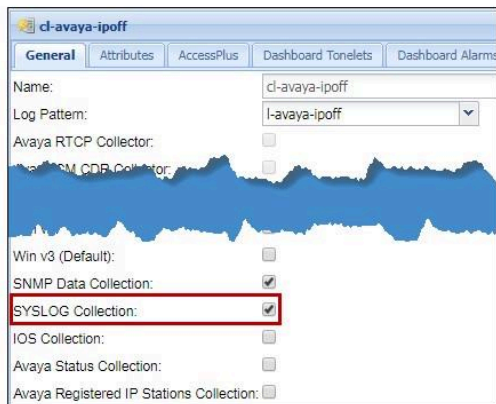


Enhancements

Syslog Data Collection

Users have been able to collect syslog data on devices by setting up channels on the DAP. This enhancement removes the need for channels to gather syslog data. Now users can invoke syslog data collection at the class level, which propagates this option to all entities of that class. At the entity level syslog data collection is enabled by selecting that option and entering the IP address of the device.

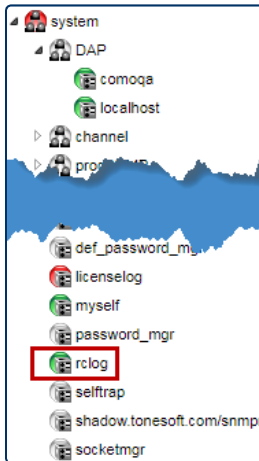
Enabled at the class level



Enabled at the entity level



Enhanced Logging Capabilities for the rlog Entity



The entity 'rlog' captures structural changes made in ReliaTel. Adding or removing a user, entity, or collector are examples of structural changes. The methodology used to capture rlog data has been enhanced by making the log messages more consistent and by broadening the scope of data collected.

Error Notification - ReliaTel Has Lost Connection to the Database

When ReliaTel loses the connection to the database it's blocked from monitoring your network. To let you know when this happens ReliaTel will switch from the product interface to the login screen and display this message - **Database communication problem, check database logs** - to describe the status of the connection between ReliaTel and the database.

